

# AEROSPACE

## Industrial Component Hardware



In today's aerospace industry, there is a growing demand for lightweight, sustainable, and traceable products. Sugatsune recognizes this need and takes pride in being an AS9120 Aerospace certified company. We offer a wide range of top-quality hardware, including catches, latches, cable grommets, hinges, dampers, hooks, lid stays, and parts customized for your needs.



# HINGES



**304B Stainless Steel**  
A robust stainless steel cup hinge. Adjustable and available for overlay applications..



**SFTH-05-35**  
A torque hinge made of stainless steel that uses friction to keep a lid or door in the desired position.



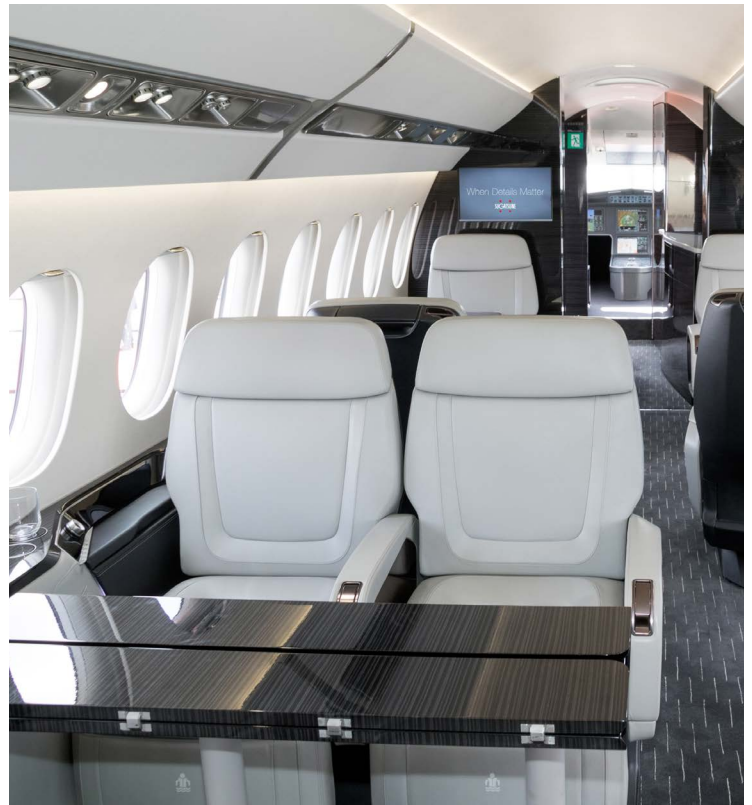
**HES-Series**  
Family of fully adjustable concealed hinges (3/4" - 1 1/2" doors) that can hold up to 200lbs doors..



**HG-YJ50**  
Detent hinge holds doors at 4 different positions (90°each) without secondary support.



**HG-TMH**  
Tabletop Dual Torque Hinges features enclosure hinges designed for table extensions, & fold-down trays.



# CATCHES & LATCHES



**HC-85/S**  
Sliding Door Latches With Indicator surface mounts and has a non-handed slim design.



**BCTS Stainless Steel**  
Made of high grade 316 Stainless steel tension catch. Available in 3 sizes.



**ESN-195-3.1, MC-37**  
Non-magnetic push latch with strong retaining force. MC-37 available with floating strike or fixed strike.



**MC-JMP45**  
Silicone sealed neodymium mag. catch. Avoids metal to metal contact.



**PKL-08**  
Push Knob For Locking Latch Door locks when the knob is pushed in and is non-handed.



**LC Flush Slam Latch Series**  
Door will be latched when closed. Pull paddle handle to open.

# HANDLES



**HKM**  
The Stainless Steel Folding Handle is a 90° folding handle. It can be tilted when not in use.



**ALH**  
Extruded Aluminium Handles have anti-slip bumps along the edges, and angled surfaces help to prevent dust accumulation.



**MTH**  
Aluminum Pipe Handles come in various sizes but can be cut to custom-fit applications.



**HR**  
The Hatch Pull handle is concealed when not in use to stay out of the way.

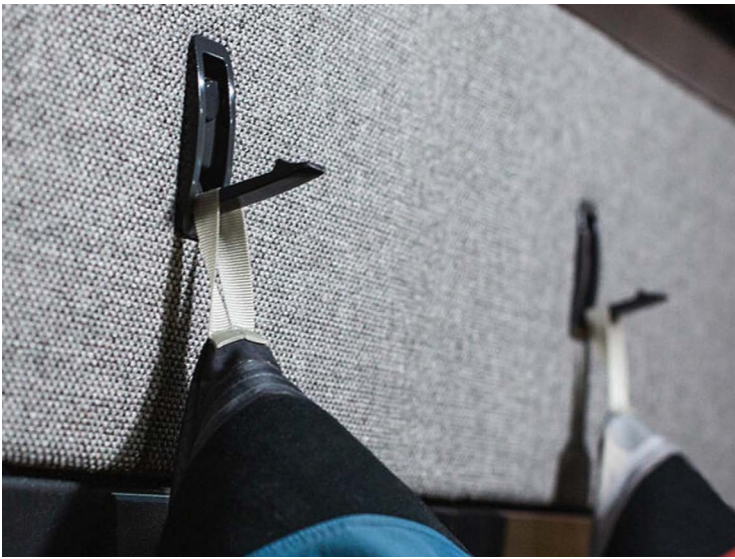
# DAMPERS



**UDH**  
Torque Dampers keeps lids/doors from slamming shut.



**SRT-C2, SRN-C2**  
Rotary Dampers One/Two Way



## HOOKS



**NF-60D**  
Recessed Hooks are loaded to retract—ideal for vibration or shock applications.



**NF-45D (SC)**  
Soft-close recessed hooks have an angular, modern look that many designers and end users prefer.



**NF-47**  
Soft closing function folding hook automatically closes gradually after items on hook are removed.

## LIDS & GROMMETS



**SAM, SAD, 1-1212, ASD**  
Stainless Steel Ventilators



**S445**  
Cable Grommets come in various sizes and are available in black or white.



**AZ-GD231-HL**  
Rectangular stainless steel multi purpose lid w/ soft close. Available in various sizes.

## LID SUPPORTS



**U-3005**  
Multi-Angle Door Stay locks lid in multiple positions by manually sliding lock lever. Slide back lever to lock/unlock.



**S-21, S-23**  
Locking Stay with ball catch for light weight doors. Catch automatically holds lid in opened position.



**L-FS350A**  
Lid Stay w/ Lock can lock the lid in various positions by manually sliding the lock lever, while sliding the lever back locks/unlocks it.



**L-140S**  
Lid Stay holds the lid or panel in the opened position. Lift the lid to release.



## SLIDES



**AR2**  
The Aluminum Slides feature a 3/4 extension and a non-handed positive stop.



**AR3**  
The Aluminum Slides feature a full extension and a non-handed positive stop.

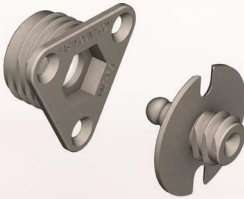
# FASTMOUNT

PANEL MOUNTING SOLUTIONS



## Fastmount® Low Profile Heavy Duty Clips

The Very Low Profile Range offers the least space between panel and substrate, and is suited to very thin substrates and/or panels with no special tools required for installation.



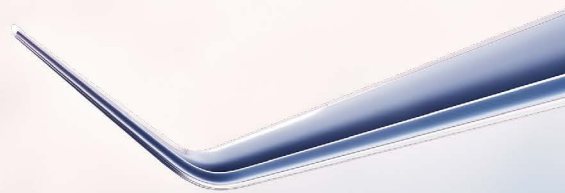
## Fastmount® Metal Clips

The Metal Range is recommended for wall panel applications that require a robust hidden fixing. Self-tapping, screw or rivet and self-adhesive fix options available, with pull-out loads of 5kg or 10kg depending on female clip used.



## Fastmount® Textile Clips

The Textile Range is designed for mounting soft textiles to fabrics and hard surfaces in both interior and exterior settings with clip sets holding up to a 32kg break out load.



Please visit us at [www.sugatsune.com](http://www.sugatsune.com) to see a comprehensive list of our products in addition to having access to downloadable CAD files.



Sugatsune America  
18101 Savarona Way,  
Carson, CA 90746



[sugatsune.com](http://sugatsune.com)

1.888.557.5267